

Doctoral Programs in Communication: Updated Report for 2009-2010 Graduates

A Supplemental Report

Annual Surveys of Journalism & Mass Communication

Lee B. Becker • Tudor Vlad • David Sholla • Konrad Kalpen

James M. Cox Jr. Center for International Mass Communication Training and Research

Grady College of Journalism & Mass Communication

University of Georgia

Athens, GA 30602

Tel. 706 542-5023

www.grady.uga.edu/annualsurveys/

2011 Project Sponsors:

Association for Education in Journalism & Mass Communication*

Association of Schools of Journalism & Mass Communication

Gannett

Hearst Corporation

McCormick Foundation*

National Association of Broadcasters

Newspaper Association of America

Scripps Howard Foundation

Specialized Information Publishers Foundation

School of Journalism, Indiana University

School of Journalism and Mass Communication, University of Iowa

School of Journalism and Mass Communication, University of Minnesota

Grady College of Journalism & Mass Communication, University of Georgia

*Sustaining Sponsor

August 9, 2012

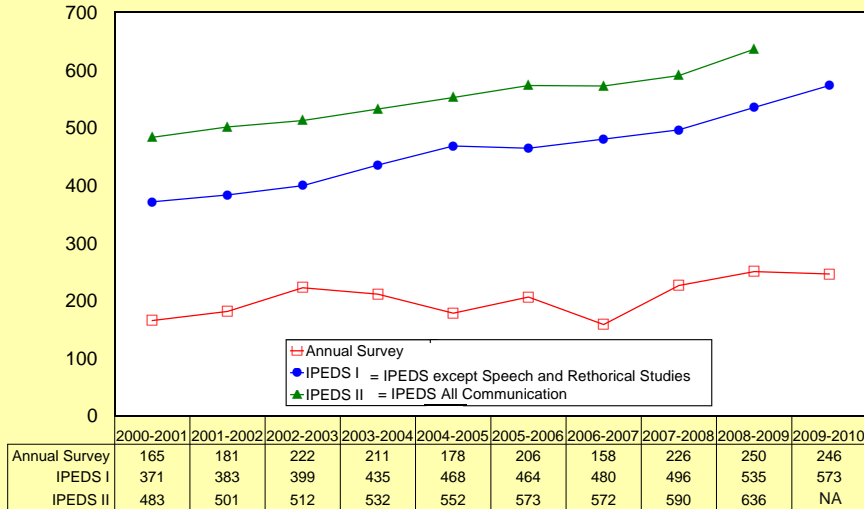


Executive Summary

- Sixty-eight universities in the U.S. reported enrollments in doctoral programs as part of the 2009-2010 the Integrated Postsecondary Education Data System (IPEDS), the core postsecondary education data collection program of the National Center for Education Statistics (NCES).
- These 68 universities listed 95 different programs in terms of the Classification of Instructional Programs (CIP) codes used by IPEDS.
- The programs, based on this classification system, focus overwhelmingly on Speech Communication and Rhetoric.
- Mass Communication and Media Studies is the second most common classification of the programs.
- Those programs granted 576 degrees in academic year 2009-2010.
- Women dominate the field, earning 60.9% of the doctoral degrees conferred in communications in 2009-2010.
- Students from outside the U.S. earned 22.9% of the doctoral degrees granted in the field of communication in 2009-2010.
- Among domestic graduates, members of racial and ethnic minorities are few. Only 5.2 percent of the degrees granted went to African-Americans, and only 3.6% went to Hispanics. Asian Pacific Islanders earned 6.5% of the doctoral degrees.
- Because IPEDS changed the CIP codes dramatically for the 2009-2010 reporting periods, comparisons with previous years are difficult. The evidence does not suggest that the field is becoming appreciably more diverse in terms of racial and ethnic composition of the graduates.

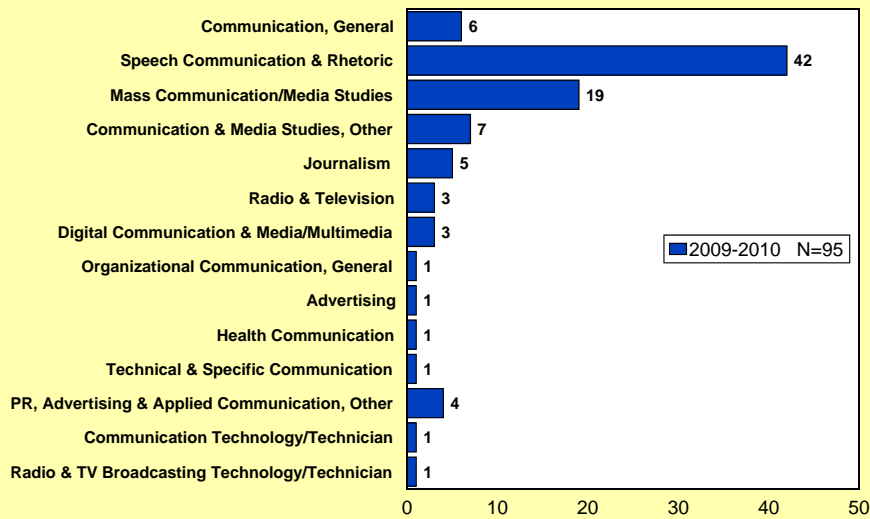
1. Doctoral degree granted: 2000-2010

IPEDS and Annual Survey Estimates



Source: Annual Survey of Journalism & Mass Communication Enrollments
 Institute of Education Sciences, National Center for Education Statistics

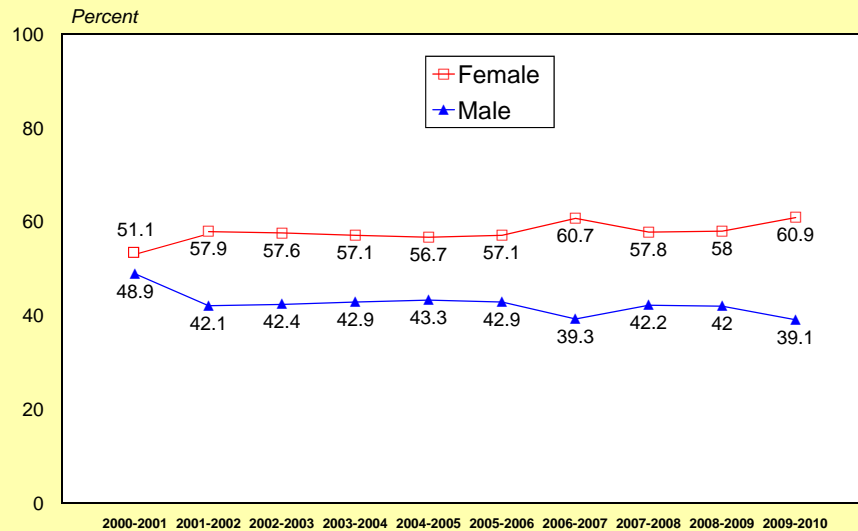
2. Use of new IPEDS CIP codes in 2009-2010



Source: Annual Survey of Journalism & Mass Communication Enrollments
 Institute of Education Sciences, National Center for Education Statistics

3. Ph.D. and gender

Doctoral degrees granted by gender: 2001-2010



Institute of Education Sciences, National Center for Education Statistics

4. Ph.D. and race/ethnicity

Doctoral degrees granted by race/ethnicity: 2001-2010

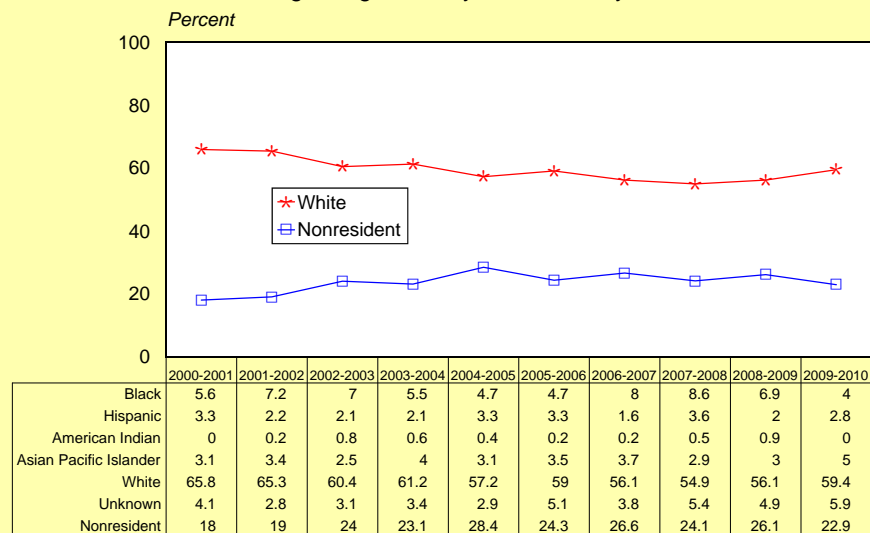


Table 1. List of Universities Reporting Doctoral Programs in Communication (CIP 09, 10) 2009-2010

Arizona State University
Bowling Green State University-Main Campus
Brown University
Clemson University
Columbia University in the City of New York
Cornell University
Florida State University
Georgia Institute of Technology-Main Campus
Georgia State University
Indiana University-Bloomington
Louisiana State University and Agricultural & Mechanical College
Massachusetts Institute of Technology
Michigan State University
Michigan Technological University
New York University
North Dakota State University-Main Campus
Northwestern University
Ohio State University-Main Campus
Ohio University-Main Campus
Pennsylvania State University-Main Campus
Purdue University-Main Campus
Regent University
Rensselaer Polytechnic Institute
Southern Illinois University Carbondale
Stanford University
Syracuse University
Teachers College at Columbia University
Temple University
Texas A & M University-College Station
Texas Tech University
The University of Alabama
The University of Tennessee
The University of Texas at Austin
University at Buffalo
University of Arizona
University of California-San Diego
University of California-Santa Barbara
University of Colorado Boulder
University of Denver
University of Florida
University of Georgia
University of Hawaii at Manoa
University of Illinois at Urbana-Champaign
University of Iowa
University of Kansas
University of Kentucky

University of Maryland-College Park
University of Massachusetts Amherst
University of Memphis
University of Miami
University of Michigan-Ann Arbor
University of Minnesota-Twin Cities
University of Missouri-Columbia
University of Nebraska-Lincoln
University of North Carolina at Chapel Hill
University of North Dakota
University of Oklahoma Norman Campus
University of Oregon
University of Pennsylvania
University of South Carolina-Columbia
University of Southern California
University of Southern Mississippi
University of Utah
University of Washington-Seattle Campus
University of Wisconsin-Madison
Washington State University
Wayne State University
West Virginia University

Table 2. Classification of Instructional Programs (CIP) Codes Used

Classification of Instructional Programs (CIP) Codes	Frequency	Percent
9.0100 Communication, General	6	6.3
9.0101 Speech Communication and Rhetoric	42	44.2
9.0102 Mass Communication/Media Studies	19	20
9.0199 Communication and Media Studies, Other	7	7.4
9.0401 Journalism	5	5.3
9.0701 Radio and Television	3	3.2
9.0702 Digital Communication and Media/Multimedia	3	3.2
9.0901 Organizational Communication, General	1	1.1
9.0903 Advertising	1	1.1
9.0905 Health Communication	1	1.1
9.0908 Technical and Specific Communication	1	1.1
9.9999 Public Relations, Advertising and Applied Communication, Other	4	4.2
10.0105 Communications Technology/Technician	1	1.1
10.0202 Radio and Television Broadcasting Technology/Technician	1	1.1
Total	95	100

Table 3. Race and Ethnicity of Degree Recipients Communication Doctoral Programs

	2009-2010 IPEDS		2008-2009 IPEDS		2007-2008 IPEDS		2006-2007 IPEDS		2005-2006 IPEDS	
	Count	Percent	Count	Percent	Count	Percent	Count	Percent	Count	Percent
Gender										
Male	225	39.1%	267	42%	249	42.2	225	39.3	246	42.9
Female	351	60.9%	369	58%	341	57.8	347	60.7	327	57.1
Total	576	100.0%	636	100%	590	100.0	572	100.0	573	100.0
Race/Ethnicity										
Black	23	4.0%	44	6.9%	51	8.6	46	8.0	27	4.7
Hispanic	16	2.8%	13	2.0%	21	3.6	9	1.6	19	3.3
American Indian	0	0.0%	6	0.9%	3	0.5	1	0.2	1	0.2
Asian Pacific Islander	29	5.0%	19	3.0%	17	2.9	21	3.7	20	3.5
White	342	59.4%	357	56.1%	324	54.9	321	56.1	338	59.0
Unknown	34	5.9%	31	4.9%	32	5.4	22	3.8	29	5.1
Nonresident Alien	132	22.9%	166	26.1%	142	24.1	152	26.6	139	24.3
Total	576	100.0%	636	100.0%	590	100.0	572	100.0	573	100.0
Domestic Students Only: Gender										
Male	177	39.9%	196	41.7%	185	41.3	152	36.2	173	39.9
Female	267	60.1%	274	58.3%	263	58.7	268	63.8	261	60.1
Total	444	100.0%	470	100.0%	448	100.0	420	100.0	434	100.0
Domestic Students Only: Race/Ethnicity										
Black	23	5.2%	44	9.4%	51	11.4	46	11.0	27	6.2
Hispanic	16	3.6%	13	2.8%	21	4.7	9	2.1	19	4.4
American Indian	0	0.0%	6	1.3%	3	0.7	1	0.2	1	0.2
Asian Pacific Islander	29	6.5%	19	4.0%	17	3.8	21	5.0	20	4.6
White	342	77.0%	357	76.0%	324	72.3	321	76.4	338	77.9
Unknown	34	7.7%	31	6.6%	32	7.1	22	5.2	29	6.7
Total	444	100.0%	470	100.0%	448	100.0	420	100.0	434	100.0

2004-2005 IPEDS		2003-2004 IPEDS		2002-2003 IPEDS		2001-2002 IPEDS		2000-2001 IPEDS	
Count	Percent	Count	Percent	Count	Percent	Count	Percent	Count	Percent
239	43.3	228	42.9	217	42.4	211	42.1	236	48.9
313	56.7	304	57.1	295	57.6	290	57.9	247	51.1
552	100.0	532	100.0	512	100.0	501	100.0	483	100.0
26	16.6	29	5.5	36	29.3	36	7.2	27	5.6
18	11.5	11	2.1	11	8.9	11	2.2	16	3.3
2	1.3	3	0.6	4	3.3	1	0.2	0	0.0
17	10.8	21	4.0	13	10.6	17	3.4	15	3.1
316	201.3	320	61.2	309	251.2	327	65.3	318	65.8
16	10.2	18	3.4	16	13.0	14	2.8	20	4.1
157	100.0	121	23.1	123	100.0	95	19.0	87	18.0
552	351.6	523	100.0	512	416.3	501	100.0	483	100.0
166	42.0	162	40.3	161	41.4	168	41.4	183	46.2
229	58.0	240	59.7	228	58.6	238	58.6	213	53.8
395	100.0	402	100.0	389	100.0	406	100.0	396	100.0
26	162.5	29	7.2	36	9.3	36	8.9	27	6.8
18	112.5	11	2.7	11	2.8	11	2.7	16	4.0
2	12.5	3	0.7	4	1.0	1	0.2	0	0.0
17	106.3	21	5.2	13	3.3	17	4.2	15	3.8
316	1975.0	320	79.6	309	79.4	327	80.5	318	80.3
16	100.0	18	4.5	16	4.1	14	3.4	20	5.1
395	2468.8	402	100.0	389	100.0	406	100.0	396	100.0